



# MobileLinQ FIELD DEPLOYMENT KIT



## INDEX

Page 1.....	Title
Page 2.....	Overview
Page 3.....	Schematics & Popular Configurations
Page 4.....	Customize Your Kit
Page 5.....	Ordering Portal
Page 6-9.....	Use Cases
Page 10.....	How to Order

# FIELD DEPLOYMENT KIT

Emergency Communications | Primary Failover | Remote Video Monitoring

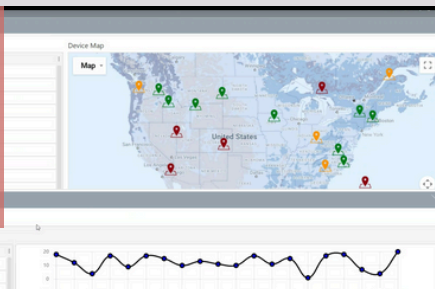
## Designed for the Peplink BR1 Pro 5G

- 4X4 MIMO CELLULAR
- 4X4 MIMO WI-FI
- OMNI-DIRECTIONAL
- 1 WAN/LAN PORT AND 1 LAN PORT
- GPS
- 600 MHz – 6 GHz
- WI-FI 6 COMPATIBLE

**90 watt battery capacity for up to 8 hours of battery life!**



**Now with MobileLinQ tracking and telemetry!**



**Starting at \$19.99/month**

**Perfectly Sized for Backpacks and Carry-Ons**

### On-Screen Indicators for:

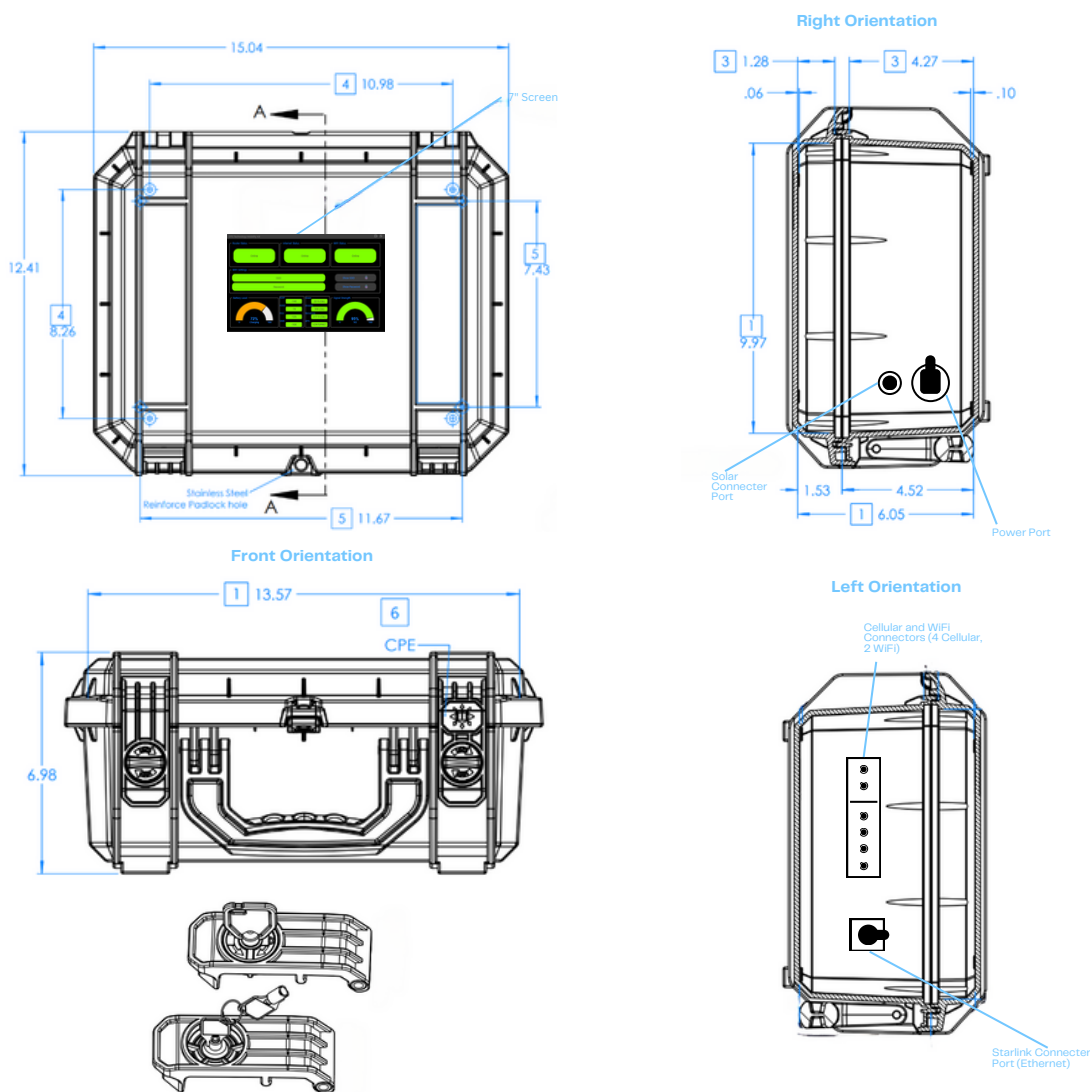
- Battery Life
- Generator Output
- Connection
- Signal Strength
- RSRP / RSRQ / SINR / RSSI
- WAN DL / UL
- LTE Usage
- APN
- Wi-Fi Status
- Wi-Fi Connectivity

\*\$899 as shown, with 36-month lease. Requires activation on qualifying 5G or 4G LTE Business Internet plan and a purchase of a Peplink BR1 Pro 5G device. (SKU: MAX-BR1-PRO-5GH-T-PRM). Device not included in price.



**Made in the USA**

# SCHEMATICS



## POPULAR CONFIGURATIONS

	MOBILELINQ MINI SKU: MOBILELINQ-MINI	MOBILELINQ NEXUS SKU: MOBILELINQ-NEXUS	MOBILELINQ APEX SKU: MOBILELINQ-APEX
<b>ROUTER</b>	TELTONIKA RUTM50 5G	PEPLINK BR1 PRO 5G	PEPLINK BR1 PRO 5G
<b>SOLAR CONTROLLER</b>	NOT INCLUDED	INCLUDED	INCLUDED
<b>ANTENNA MOUNT</b>	EXTERNAL ANTENNA PORTS WITH PADDLE ANTENNAS	EXTERNAL ANTENNA PORTS WITH PADDLE ANTENNAS	BUILT-IN HIGH-GAIN ANTENNA
<b>BATTERY</b>	12V 9AH BATTERY (EST. 8 HOURS RUN TIME)	12V 9AH BATTERY (EST. 8 HOURS RUN TIME)	12V 20AH BATTERY (EST. 20 HOURS RUN TIME)
<b>DISPLAY</b>	STANDARD BATTERY GAUGE INDICATOR	STANDARD BATTERY GAUGE INDICATOR	TOUCH SCREEN WITH ADVANCED CONTROLS
<b>STARLINK PORT</b>	NOT INCLUDED	INCLUDED	INCLUDED



# CUSTOMIZE YOUR KIT

**BASE PRICE: \$899****1****BOX SIZE**

14" Diagonal: **\$159.00**  
16" Diagonal: **Included in Price**  
17" Diagonal: **\$190.00**

**2****DEVICE**

Teltonika RUTM50: **\$499\*** (MSRP \$649)  
Peplink BR1 Pro 5G: **\$799\*** (MSRP \$949)  
Cradlepoint R980: **\$1,119\*** (MSRP \$1260)  
InHand IVG700-NRQ3: **\$899\*** (MSRP \$1049)

**3****SOLAR CONTROLLER**

No Solar Controller: **Included in Price**  
75V 15Amp Victron Charging Controller: **\$199**

**4****ANTENNA MOUNT**

External Antenna Ports with Paddle Antennas: **Included in Price**  
Built-In High-Gain Antenna: **\$349.00**

**5****BATTERY CAPACITY**

12V 9Ah Battery (Estimated 8 hour run time): **Included in Price**  
12V 20Ah battery (Estimated 20 hour run time): **\$249.00**

**6****DISPLAY**

Standard Battery Gauge Indicator: **Included in Price**  
Touch Screen With Advanced Controls: **\$499.00**

**7****STARLINK CONNECTION PORT**

No Starlink Connectivity: **Included in Price**  
Starlink Connection Port\*: **\$189**

\*Applicable to the Peplink BR1 Pro 5G Router ONLY



Add on a 40Ah Battery Pelican Case  
(Up to 48hr Continuous Use) **\$489**



Add on a Starlink Mini  
Antenna Carrying Case **\$299**

\*Requires activation on a qualifying 5G or 4G LTE Business Internet plan and the purchase of one of the eligible routers listed in Step 2 of this flyer.



# PORTAL FEATURES



## INCLUDED:



**Device fleet management**



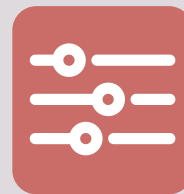
**Real-time data and historical graphs**



**Geo-location information**



**Customizable interface**



**Over 20 monitored parameters**



**OEM Agnostic**

## UPCOMING FEATURES:

*Coming May 2025*



**Integration with Hyperlinq Pro**



**Ability to Add FWA Devices**

# USE CASE

## EMERGENCY RESPONSE & DISASTER RECOVERY

- Instant failover connectivity for first responders in disaster zones
- Supports emergency command centers with reliable, high-speed data
- Lightweight and portable for rapid deployment in crisis situations



## CONSTRUCTION & REMOTE WORKSITES

- Provides stable internet access in remote and temporary job sites
- Supports live video feeds for site monitoring and safety compliance
- Compact and durable design withstands harsh environments



## TRANSPORTATION & FLEET OPERATIONS

- Provides real-time GPS tracking and telemetry for fleet management
- Supports vehicle Wi-Fi for passengers and mobile workstations
- Works with external antennas for maximum coverage on the road





# USE CASE

## TRAFFIC CONTROL & PUBLIC WORKS

- Ensures stable connectivity for smart traffic systems and temporary signals
- Supports live video feeds for monitoring and incident response
- Portable design allows for quick setup at construction zones and detours



## TEMPORARY WI-FI & EVENT CONNECTIVITY

- Provides on-demand internet for outdoor events, festivals, and conventions
- Supports remote classrooms, pop-ups, and community outreach programs
- Compact and travel-friendly with flexible battery options



## FIELD INSPECTIONS & MAPPING

- Reliable connectivity for remote inspections and reporting
- Supports GPS-enabled mapping applications for surveying and infrastructure projects
- Works seamlessly with drones and live-streaming tools for enhanced analysis



# USE CASE

## UTILITY WORK & INFRASTRUCTURE MAINTENANCE

- Provides essential communication for crews in remote service areas
- Supports real-time system monitoring and reporting for faster issue resolution
- Works in extreme weather and rugged conditions



## RURAL & TEMPORARY INTERNET SOLUTIONS

- Instant internet access in remote, off-grid locations
- Ideal for research teams, outdoor expeditions, and remote offices
- Optional Starlink port for extended coverage beyond cellular reach



## LAW ENFORCEMENT & PUBLIC SAFETY

- Enables mobile command centers with failproof connectivity
- Supports body and dash cam video uploads in real time
- GPS tracking ensures location awareness for tactical teams





# USE CASE

## AGRICULTURE & PRECISION FARMING

- Provides stable internet access for remote farms and ranches
- Supports real-time data collection from IoT sensors, drones, and equipment
- Enables GPS-guided machinery and precision farming applications
- Works in rural areas where traditional networks are unreliable



## LIVE STREAMING & MEDIA PRODUCTION

- Delivers fast and stable connectivity for live event broadcasting
- Ensures reliable video uploads from remote or crowded areas
- Compact and travel-friendly for on-the-go professionals



## MINING & RESOURCE EXTRACTION

- Provides stable communication in remote and underground sites
- Supports real-time equipment monitoring and safety tracking
- Enables GPS mapping and drone surveys for site management
- Rugged design withstands harsh conditions and extreme weather





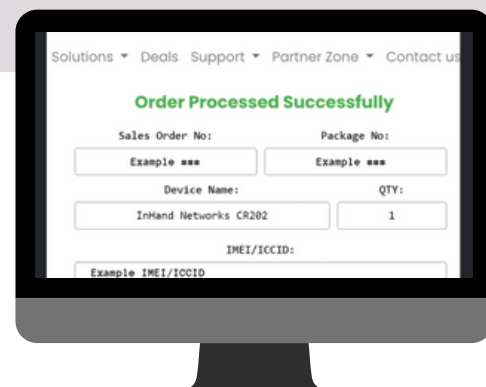
## MEET OUR TEAM | YOUR PARTNERS IN SUCCESS

Left to Right:  
**Melissa Fair**, Director of Sales  
**Jeremiah Bentz**, U-CAAS Specialist  
**Krisly Teves**, Telesales  
**Aivie Escalante**, Telesales  
**Mel Cacho**, Sales Specialist

## 3 EASY WAYS TO ORDER

# 1

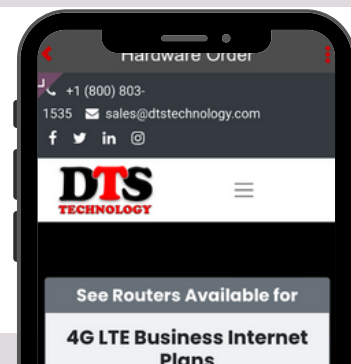
ORDER ONLINE AT  
**WWW.DTSDEVICES.COM**  
**INSTANT IMEIS!**



# 2

THE DTS RED  
MOBILE APP  
**INSTANT IMEIS!**

DOWNLOAD  
FOR  
**FREE**



# 3

CALL OUR HELPFUL TELESales LINE AT  
**855.722.0204**  
AND SELECT OPTION #1

